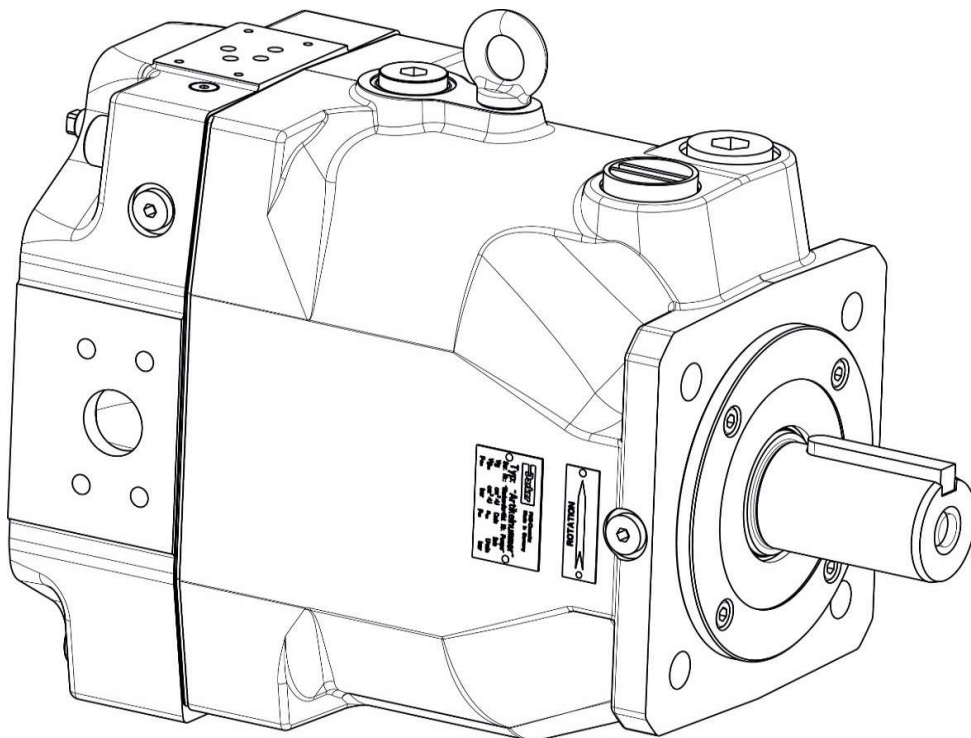




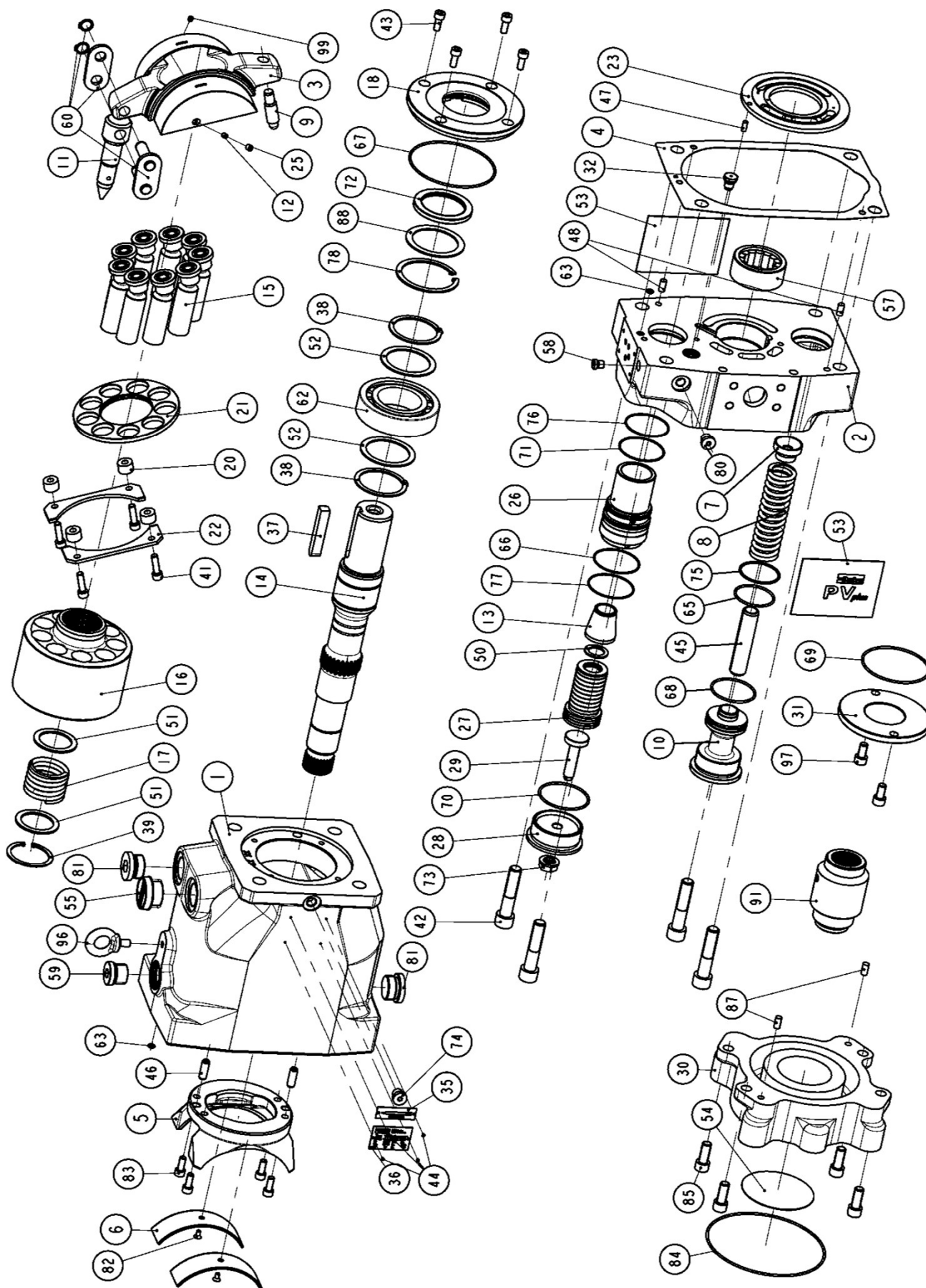
Ersatzteilliste/Spare part list *PVplus*

PV140 & PV180 Baugröße 4/Frame size 4 Konstruktionsstand/Design Series

44



PV140 & PV180
Explosionsdarstellung / Exploded View



| Zuordnung der Positionsnummern zu den Ersatzteilsätzen | | | |
|--|--|-------------|---------------------------------|
| Pos.Nr. | Bezeichnung | Seite | Ersatzteilsatz |
| 1 | Pumpengehäuse | 10 | Gehäuse |
| 2 | Anschlußplatte | 9 | Anschlussplatte |
| 3 | Schwenkrahmen | 8 | Schwenkrahmen-Satz |
| 4 | Flachdichtung, Gehäuse | 5 | Dichtungssatz |
| 5 | Schwenklager | 8 | Schwenklagersatz |
| 6 | Gleitlagerschale | 6, 8 | Gleitlager- / Schwenklager-Satz |
| 7, 8 | Federteller, Rückstellfeder | 7 | Rückstellfeder-Satz |
| 9 | Anlenkstück Rückstellfeder | 8 | Schwenkrahmen-Satz |
| 10 | Federstopfen | 7 | Rückstellfeder-Satz |
| 11 | Schwenkschraube | 8 | Schwenkrahmen-Satz |
| 12, 25, 99 | Blende, Stopfen für Schwenkrahmen | 8 | Schwenkrahmen-Satz |
| 13 | Kegelhülse / Konturhülse | 9 | Kegel-/Konturhülse |
| 14 | Welle | 7 | Welleneinheit |
| 15 | Kolben-Kolbenschuh | 7 | Kolbensatz |
| 16 | Zylindertrommel | 6 | Zylindertrommel-Satz |
| 17 | Niederhaltefeder, Zylindertrommel | 6 | Zylindertrommel-Satz |
| 18 | Zentrierdeckel | 9 | Zentriedeckelsatz |
| 20 | Distanzstück, Niederhaltung | 7 | Niederhalte-Satz |
| 21 | Niederhaltescheibe | 7 | Niederhalte-Satz |
| 22 | Niederhaltesegment | 7 | Niederhalte-Satz |
| 23 | Steuerscheibe | 6 | Zylindertrommel-Satz |
| 26 | Laufbuchse für Stellkolben | 8 | Laufbuchse für Stellkolben |
| 27 | Stellkolben | 7 | Stellkolben-Satz |
| 28 | Verschlußdeckel | 8 | Hubbegrenzung, einstellbar |
| 29 | Anschlagspindel | 8 | Hubbegrenzung, einstellbar |
| 30 | Durchtriebsadapter | 12 | Anbausatz Durchtrieb |
| 31 | Verschlußdeckel, Durchtrieb | 12 | Anbausatz Durchtrieb |
| 32 | Stopfen | 5 | Dichtungssatz |
| 35, 36 | Drehrichtungsschild, Typenschild | 13 | - |
| 37 | Paßfeder | 7 | Welleneinheit |
| 38 | Sicherungsring für Welle | 7, 8 | Welleneinheit / Lagersatz |
| 39 | Sicherungsring, Zylindertrommel | 6 | Zylindertrommel-Satz |
| 41 | Zylinderschraube, Niederhaltung | 7 | Niederhalte-Satz |
| 42, 43 | Zylinderschraube | 6 | Verbindungssteile |
| 44 | Niet für Typenschild / Drehrichtungsschild | 13 | - |
| 45 | Stift für Schwenkfeder | 7 | Rückstellfeder-Satz |
| 46 | Zylinderstift | 8 | Schwenklager-Satz |
| 47 | Zylinderstift, Steuerscheibe | 6 | Zylindertrommel-Satz |
| 48 | Zylinderstift, Gehäuse | 6 | Verbindungssteile-Satz |
| 50 | Paßscheibe, Stellkolben | 7 | Stellkolben-Satz |
| 51 | Stützscheibe, Zylindertrommel | 6 | Zylindertrommel-Satz |
| 52 | Stützscheibe, Welle | 7, 8 | Welleneinheit / Lagersatz |
| 53, 54 | Magnetschild-Anschluß, -Durchtrieb | 13 | - |
| 55 | Schutzstopfen, Leckölanschluß | 13 | - |
| 57 | Zylinderrollenlager ohne Innenring | 7, 8 | Welleneinheit / Lagersatz |
| 58 | Verschlußstopfen, Reglerlochbild | 5 | Dichtungssatz |
| 59 | Verschlußstopfen, Rückführbohrung | 5 | Dichtungssatz |
| 60 | Kettenverschlußglied | 8 | Schwenkrahmen-Satz |
| 62 | Zylinderrollenlager, vorn | 7, 8 | Welleneinheit / Lagersatz |
| 63, 65 - 71 | O-Ring | 5, 6, 8, 12 | Dichtungssatz / Anbausatz |
| 72 | Wellendichtring | 5, 6 | Dichtungssatz / Wellendichtring |
| 73 | Dichtmutter, SEAL LOCK | 5, 8 | Dichtungssatz, Hubbegrenzung |
| 74 | Verschlußstopfen, Frontlagerbohrung | 5 | Dichtungssatz |
| 75-77, 78 | Stützringe, Sicherungsring für Wellendichtring | 5, 8 | Dichtungssatz |
| 80, 81 | Verschlußstopfen, Meß- & Leckölanschlüsse | 5 | Dichtungssatz |
| 82 | Senkkopfschraube, Lagerschale | 6, 8 | Gleitlager- / Schwenklager-Satz |
| 83 | Zylinderschraube | 8 | Schwenklagersatz |
| 84 | O-Ring, Anbaupumpe | 6, 12 | Dichtungssatz / Anbau-Satz |
| 85 | Zylinderschraube, Durchtriebsadapter | 12 | Anbausatz, Durchtrieb |
| 87 | Zylinderstift, Durchtriebsadapter | 12 | Anbausatz, Durchtrieb |
| 88 | Distanzring, Wellendichtring | 6 | Dichtungssatz |
| 91 | Kupplungsmuffe | 11 | Kupplungssatz, Durchtrieb |
| 92 | Adapter Paßfederwelle / adaptor key shaft | 11 | Kupplungssatz, Durchtrieb |
| 96 | Ringschraube | 13 | - |
| 97 | Schrauben, Verschlußdeckel für Durchtrieb | 12 | Anbausatz Durchtrieb |

| Correlation between Position Numbers and Sparepart Kits | | | |
|---|---|-------------|-------------------------------------|
| Pos. No. | description | page | replacement kit |
| 1 | housing | 10 | housing |
| 2 | cover | 9 | cover |
| 3 | swash plate | 8 | swash plate kit |
| 4 | body seal | 5 | seal kit |
| 5 | cradle | 8 | cradle kit |
| 6 | trunnion bearing | 6, 8 | trunnion bearing unit |
| 7, 8 | spring washer, servo spring, | 7 | servo spring kit |
| 9 | connector servo spring | 8 | swash plate kit |
| 10 | servo spring plug | 7 | servo spring kit |
| 11 | swash plate connector | 8 | swash plate kit |
| 12, 25, 99 | orifice, plug swash plate | 8 | swash plate kit |
| 13 | tapered / contour sleeve | 9 | feedback-, contour sleeve |
| 14 | shaft | 7 | shaft unit |
| 15 | piston and slipper | 7 | set of pistons |
| 16 | barrel | 6 | barrel kit |
| 17 | retainer spring, barrel | 6 | barrel kit |
| 18 | pilot cover | 9 | pilot cover kit |
| 20 | distance washer, retainer | 7 | retainer kit |
| 21 | slipper retainer | 7 | retainer kit |
| 22 | retainer segment | 7 | retainer kit |
| 23 | valve plate | 6 | barrel kit |
| 26 | servo piston sleeve | 8 | servo piston sleeve |
| 27 | servo piston | 7 | servo piston kit |
| 28 | servo piston cover | 8 | displacement limiter kit |
| 29 | adjusting screw | 8 | displacement limiter kit |
| 30 | thru drive adaptor | 12 | mounting kit, thru drive |
| 31 | cover plate thru drive | 12 | mounting kit, thru drive |
| 32 | port plug | 5 | seal kit |
| 35, 36 | rotation indicator, name plate | 13 | - |
| 37 | key | 7 | shaft unit |
| 38 | snap ring, shaft | 7, 8 | shaft unit / bearing kit |
| 39 | snap ring, barrel | 6 | barrel kit |
| 41 | hexagon socket head cap screw, retainer | 7 | retainer kit |
| 42, 43 | hexagon socket head cap screw | 6 | connecting bolt kit |
| 44 | rivet | 13 | - |
| 45 | pin servo spring | 7 | servo spring kit |
| 46 | locator pin for cradle | 8 | cradle kit |
| 47 | locator pin, valve plate | 6 | barrel kit |
| 48 | locator pin, body | 6 | connecting bolt kit |
| 50 | washer, servo piston | 7 | servo piston kit |
| 51 | washer, cylinder block | 6 | barrel kit |
| 52 | washer, shaft | 7, 8 | shaft unit / bearing kit |
| 53, 54 | magnet cover for ports, thru drive | 13 | - |
| 55 | protection plug, drain port | 13 | - |
| 57 | roller bearing, rear | 7, 8 | shaft unit / bearing kit |
| 58 | plug, controler interface | 5 | seal kit |
| 59 | plug, feedback bore | 5 | seal kit |
| 60 | chain link | 8 | swash plate kit |
| 62 | roller bearing, front | 7, 8 | shaft unit / bearing kit |
| 63, 65 - 71 | o-ring | 5, 6, 8, 12 | seal kit |
| 72 | shaft seal | 5, 6 | seal kit, shaft seal |
| 73 | sealing lock nut | 5, 8 | seal kit, max. displacement limiter |
| 74 | plug front bearing flushing | 5 | seal kit |
| 75-77, 78 | backup rings, snap ring for shaft seal | 5, 8 | seal kit, servo piston sleeve |
| 80, 81 | plugs, measurement & leakage ports | 5 | seal kit |
| 82 | hexagon socket head cap screw, trunnion bearing | 6, 8 | trunnion bearing unit |
| 83 | screw for cradle | 8 | cradle kit |
| 84 | o-ring, thru drive | 6, 12 | seal kit / mounting kit, thru drive |
| 85 | hexagon socket head cap screw | 12 | mounting kit, thru drive |
| 87 | locator pin, thru drive adaptor | 12 | mounting kit, thru drive |
| 88 | washer for shaft seal | 6 | seal kit |
| 91 | coupling | 11 | mounting kit coupling |
| 92 | adaptor key shaft | 11 | mounting kit coupling |
| 96 | eye bolt | 13 | - |
| 97 | screw for cover plate thru drive | 12 | mounting kit, thru drive |

| Pos. | Stk/Qty | Code | Beschreibung / Description | Bemerkung/Remark |
|------|---------|--------------|---|--------------------|
| | | SK- | Dichtungsteilesatz / seal kit | |
| | | PVBG4 | Serie PVplus, PV140 - PV180 | |
| | | N | NBR, FKM-Wellendichtring / shaft seal | |
| | | V | FKM | |
| | | B | NBR | |
| | | W | NBR, Wellendichtring / shaft seal - PTFE | |
| | | P | FKM, Wellendichtring / shaft seal - PTFE | |
| | | 1 | Gewinde / Thread: metrisch / metric ; Anschlüsse / ports: BSPP | |
| | | 3 | Gewinde / Thread: UNC ; Anschlüsse / ports: UNF | |
| | | 7 | Gewinde / Thread: UNC ; Anschlüsse / ports: ISO6149 | |
| | | 8 | Gewinde / Thread: metrisch/metric ; Anschlüsse/ports: ISO6149 | |
| | | 44 | Konstruktionsstand / design series 44 | |
| | | | enthält / includes: | |
| 4 | 1 | | Flachdichtung / body seal | |
| 32 | 1 | | Stopfen / port plug - VSTI-12x1,5-OR-CF ISO 6149 | Code: N,B |
| 32 | 1 | | Stopfen / port plug - VSTI-12x1,5-OR-CF ISO 6149 | Code: V |
| 58 | 1 | | Stopfen / port plug - VSTI-10x1-OR-A3C ISO 6149 NBR | Code: N, B |
| 58 | (1) | | Stopfen / port plug - VSTI-10x1-OR-A3C ISO 6149 FKM | Code: V |
| 59 | 1 | | Stopfen / port plug - M 27 x 2 ISO 6149, NBR | Code: N, B |
| 59 | (1) | | Stopfen / port plug - M 27 x 2 ISO 6149, FKM | Code: V |
| 63 | 2 | | O-Ring 2-010 P5001-94, 6,07X1,78 | Code: N, B |
| 63 | (2) | | O-Ring 2-010 P5001-94, 6,07X1,78 | Code: V |
| 65 | 1 | | O-Ring - 2-136-N552-90; 50,47 x 2,62 | Code: N, B |
| 65 | (1) | | O-Ring - 2-136-V747-75; 50,47 x 2,62 | Code: V |
| 66 | 1 | | O-Ring - 2-036-N552-90; 60,05 x 1,78 | Code: N, B |
| 66 | (1) | | O-Ring - 2-036-V747-75; 60,05 x 1,78 | Code: V |
| 67 | 1 | | O-Ring - 2-157-N552-90; 113,97 x 2,62 | Code: N, B |
| 67 | (1) | | O-Ring - 2-157-V747-75; 113,97 x 2,62 | Code: V |
| 68 | 1 | | O-Ring - 2-140-N552-90; 56,82 x 2,62 | Code: N, B |
| 68 | (1) | | O-Ring - 2-140-V747-75; 56,82 x 2,62 | Code: V |
| 69 | 1 | | O-Ring - 2-153-N552-90; 88,57 x 2,62 | Code: N, B |
| 69 | (1) | | O-Ring - 2-153-V747-75; 88,57 x 2,62 | Code: V |
| 70 | 1 | | O-Ring - 2-145-N552-90; 64,77 x 2,62 | Code: N, B |
| 70 | (1) | | O-Ring - 2-145-V747-75; 64,77 x 2,62 | Code: V |
| 71 | 1 | | O-Ring - 2-035-N552-90; 56,87 x 1,78 | Code: N, B |
| 71 | (1) | | O-Ring - 2-035-V747-75; 56,87 x 1,78 | Code: V |
| 72 | 1 | | Wellendichtring / shaft seal - 60 x 80 x 7-NBR | Code: B |
| 72 | (1) | | Wellendichtring / shaft seal - 60 x 80 x 7-FKM | Code: V,N |
| 72 | (1) | | Wellendichtring / shaft seal - PTFE | Code: P / W |
| 73 | 1 | | Dichtmutter / lock nut - M 14 x 1,5; SEAL LOCK | |
| 74 | 1 | | Stopfen / port plug - BSPP-R1/4"-EDCF NBR | Code: 1 + N, B |
| 74 | (1) | | Stopfen / port plug - BSPP-R1/4"-EDCF FKM | Code: 1+ V |
| 74 | (1) | | Stopfen / port plug - VSTI-12x1,5-OR-CF ISO 6149 | Code: 7/8 + N, B |
| 74 | (1) | | Stopfen / port plug - VSTI-12x1,5-OR-CF ISO 6149 | Code: 7/8 + V |
| 74 | (1) | | Stopfen / port plug - SAE-4, 4HP50NS, 7/16-20 UNF NBR | Code: 3+ N, B |
| 74 | (1) | | Stopfen / port plug - SAE-4, 4HP50NS, 7/16-20 UNF FKM | Code: 3+ V |
| 75 | 1 | | Stützring / backup ring -56X51,9X1,2 PTFE | Code: N, B, V |
| 76 | 1 | | Stützring / backup ring - 59,5 x 1,3 PTFE | Code: N, B, V |
| 77 | 1 | | Stützring / backup ring - 64,0 X 1,3 PTFE | Code: N, B, V |
| 78 | 1 | | Sicherungsring / snap ring - J82 x 2,5 DIN472 (für / for position 72) | |
| 80 | 1 | | Stopfen / port plug - VSTI R1/4" ED NBR | Code: 1 + N, B |
| 80 | (1) | | Stopfen / port plug - VSTI R1/4" ED FKM | Code: 1 + V |
| 80 | (1) | | Stopfen / port plug - 4HP50NS-NBR, 7/16-20 UNF | Code: 3 + N, B |
| 80 | (1) | | Stopfen / port plug - 4HP50NS-FKM, 7/16-20 UNF | Code: 3 + V |
| 80 | (1) | | Stopfen / port plug - VSTI-12x1,5-OR-CF ISO 6149 | Code: 7 / 8 + N, B |
| 80 | (1) | | Stopfen / port plug - VSTI-12x1,5-OR-CF ISO 6149 | Code: 7 / 8 + V |
| 81 | 2 | | Stopfen / port plug - VSTI R1" ED NBR | Code: 1 + N, B |
| 81 | (2) | | Stopfen / port plug - VSTI R1" ED FKM | Code: 1 + V |
| 81 | (2) | | Stopfen / port plug - 16HP50NS-NBR, 1 5/16-12 UNF | Code: 3 + N, B |
| 81 | (2) | | Stopfen / port plug - 16HP50NS-FKM, 1 5/16-12 UNF | Code: 3 + V |
| 81 | (2) | | Stopfen / port plug - VSTI-33 x 2-OR-A3C ISO 6149 NBR | Code: 7 / 8 + N, B |
| 81 | (2) | | Stopfen / port plug - VSTI-33 x 2-OR-A3C ISO 6149 FKM | Code: 7 / 8 + V |

| | | | | |
|-----|-----|---|--|-------------|
| 84 | 1 | | O-Ring 2-164-N552-90; 158,42 x 2,62 | Code: N, B |
| 84 | (1) | | O-Ring 2-164-V747-75; 158,42 x 2,62 | Code: V |
| 84 | 1 | | O-Ring 2-162-N674-70; 145,72 x 2,62 | Code: N, B |
| 84 | (1) | | O-Ring 2-162-V747-75; 145,72 x 2,62 | Code: V |
| 84 | 1 | | O-Ring 2-048-N552-90; 120,37 x 1,78 | Code: N, B |
| 84 | (1) | | O-Ring 2-048-V747-75; 120,37 x 1,78 | Code: V |
| 84 | 1 | | O-Ring 2-044 N552-90; 94,97 x 1,78 | Code: N, B |
| 84 | (1) | | O-Ring 2-044-V747-75; 94,97 x 1,78 | Code: V |
| 84 | 1 | | O-Ring 2-041-N552-90; 75,92 x 1,78 | Code: N, B |
| 84 | (1) | | O-Ring 2-041-V747-70; 75,92 x 1,78 | Code: V |
| 88 | 1 | | Passscheibe / washer - PS 63X80X2 DIN988 | |
| 261 | 1 | | O-Ring 6-346-N552-90; 9,4 x 2,1 (für / for position 32) | Code: N, B |
| 261 | (1) | | O-Ring 6-346-V747-75; 9,4 x 2,1 (für / for position 32) | Code: V |
| | | SK- PVBG4 WDR N V B W P 41 | Ersatzteil-Satz / Replacement kit Serie PVplus, PV140 - PV180 Wellendichtring / shaft seal NBR, FKM-Wellendichtring / shaft seal FKM NBR Wellendichtring / shaft seal PTFE + O-Ring NBR Wellendichtring / shaft seal PTFE + O-Ring FKM Konstruktionsstand / design series 41 - 44 enthält / includes: | |
| 67 | 1 | | O-Ring - 2-157-N552-90; 113,97 x 2,62 | Code: N, B |
| 67 | (1) | | O-Ring - 2-157-V747-75; 113,97 x 2,62 | Code: V |
| 72 | 1 | | Wellendichtring / shaft seal - 60 x 80 x 7-NBR | Code: B |
| 72 | (1) | | Wellendichtring / shaft seal - 60 x 80 x 7-FKM | Code: V, N |
| 72 | (1) | | Wellendichtring / shaft seal - PTFE | Code: P / W |
| | | RK- PVBG4 GLE 40 | Ersatzteil-Satz / Replacement kit Serie PVplus, PV140 - PV180 Gleitlagereinheit / trunnion bearing unit Konstruktionsstand / design series 40 - 44 enthält / includes: | |
| 6 | 2 | | Gleitlagerschale / trunnion bearing | |
| 82 | 2 | | Schraube TUF-LOK / screw coated - ISO 10642-M5x10 -10.9 | |
| | | RK- PVBG4 VT M 40 | Ersatzteil-Satz / Replacement kit Serie PVplus, PV140 - PV180 Verbindungsteile-Satz / connecting bolt kit metrisch / metric Konstruktionsstand / design series 40 - 44 enthält / includes: | |
| 42 | 4 | | Schraube / screw - M16x75 DIN912 12.9 | |
| 43 | 4 | | Schraube / screw - M8x20 DIN912 12.9 | |
| 48 | 2 | | Zylinderstift / pin - 8 M6x16 DIN7 St 50K | |
| | | RK- PVBG4 ZYT R L 40 | Ersatzteil-Satz / Replacement kit Serie PVplus, PV140 - PV180 Zylindertrommel-Satz / Barrel kit Rechtslauf / rotating clockwise Linkslauf / rotating counter-clockwise Konstruktionsstand / design series 40 - 44 enthält / includes: | |
| 16 | 1 | | Zylindertrommel / cylinder block | |
| 17 | 1 | | Niederhaltefeder / retainer spring | |
| 39 | 1 | | Sicherungsring / snap ring - 60x2 DIN472 | |
| 51 | 2 | | Stützscheibe / washer - SS45X59X2.5 | |
| 23 | 1 | | Steuerscheibe rechtslauf / valve plate CW | Code: R |
| 23 | (1) | | Steuerscheibe linkslauf / valve plate CCW | Code: L |
| 47 | 1 | | passstift / locator pin - 6x14 DIN1474 | |

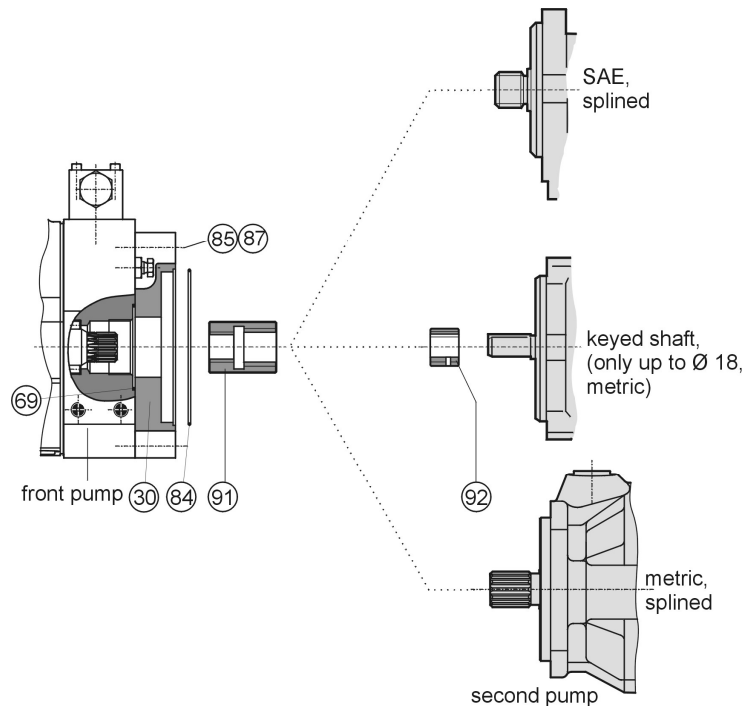
| | | | | |
|----|-----|---|--|----------------------------------|
| | | RK- PVBG4 NHS 40 | Ersatzteil-Satz / Replacement kit Serie PVplus, PV140 - PV180 Niederhalte-Satz / Retainer kit Konstruktionsstand / design series 40 - 44 enthält / includes: | |
| 20 | 4 | | Distanzstück / distance washer | |
| 21 | 1 | | Haltescheibe / slipper retainer plate | |
| 22 | 2 | | Niederhaltesegment / retainer segment | |
| 41 | 4 | | Schraube / screw - M8x30 DIN912 12.9-TUF - LOCK | |
| | | RK- PVBG4 KOS 40 | Ersatzteil-Satz / Replacement kit Serie PVplus, PV140 - PV180 Satz Kolben-Kolbenschuh / Piston assembly set Konstruktionsstand / design series 40 - 44 enthält / includes: | |
| 15 | 9 | | Kolben- und Kolbenschuh / piston & slipper | |
| | | RK- PVBG4 RFS 40 | Ersatzteil-Satz / Replacement kit Serie PVplus, PV140 - PV180 Rückstellfeder-Satz / servo spring kit Konstruktionsstand 40 - 44 enthält / includes: | |
| 7 | 1 | | Federteller Rückstellfeder / servo spring washer | |
| 8 | 1 | | Rückstellfeder / servo spring | |
| 10 | 1 | | Federstopfen / servo spring plug | |
| 45 | 1 | | Connex / pin for servo spring - LG 22x100 | |
| | | RK- PVBG4 SKS 42 | Ersatzteil-Satz / Replacement kit Serie PVplus, PV140 - PV180 Stellkolben-Satz / servo piston kit Konstruktionsstand / design series 42 - 44 enthält / includes: | |
| 27 | 1 | | Stellkolben /servo piston | |
| 50 | 1 | | Stützscheibe / washer - SS 22x32x2 DIN988 | |
| | | RK- PVBG4 WP WZ WQ WF M S -PTFE 40 | Ersatzteil-Satz / Replacement kit Serie PVplus, PV140 - PV180 Welle - Paßfeder / shaft keyed Welle - verzahnt / shaft splined Welle - Paßfeder / shaft keyed, (Code: D) Welle - verzahnt / shaft splined, (Code: E) metrische / metric SAE/UNC für PTFE-Wellendichtring / for PTFE shaft seal Konstruktionsstand / design series 40 - 44 enthält / includes: | nur / only SAE nur / only SAE |
| 14 | 1 | | Welle-Paßfeder-metrisch / shaft-keyed-metric | Code:K (WPM) |
| 14 | (1) | | Welle-Paßfeder-metrisch / shaft-keyed-metric | Code:K (WPM+PTFE) |
| 14 | (1) | | Welle-Paßfeder-SAE / shaft-keyed-SAE, verstärkt / reinforced | Code:D (WQS) |
| 14 | (1) | | Welle-Paßfeder-SAE / shaft-keyed-SAE, verstärkt / reinforced | Code:D (WQS+PTFE) |
| 14 | (1) | | Welle-Paßfeder-SAE / shaft-keyed-SAE, verstärkt / reinforced | Code:F (WPS) |
| 14 | (1) | | Welle-Paßfeder-SAE / shaft-keyed-SAE, verstärkt / reinforced | Code:F (WPS+PTFE) |
| 14 | (1) | | Welle-verzahnt-metrisch / shaft-splined-metric | Code:L (WZM) |
| 14 | (1) | | Welle-verzahnt-metrisch / shaft-splined-metric | Code:L (WZM+PTFE) |
| 14 | (1) | | Welle-verzahnt-SAE / shaft-splined-SAE | Code:E (WFS) |
| 14 | (1) | | Welle-verzahnt-SAE / shaft-splined-SAE | Code:E (WFS+PTFE) |
| 14 | (1) | | Welle-verzahnt-SAE / shaft-splined-SAE | Code:G (WZS) |
| 14 | (1) | | Welle-verzahnt-SAE / shaft-splined-SAE | Code:G (WZS+PTFE) |
| 37 | 1 | | Paßfeder / key - 14x9x75 DIN6885 St | Code:K |
| 37 | (1) | | Paßfeder / key - 12,7x12,7x75,5 | Code:D |
| 37 | (1) | | Paßfeder / key - 11,1x11,1x55 | Code:F |
| 38 | 2 | | Sicherungsring / snap ring - V-AV60x2 DIN471 | |
| 52 | 2 | | Paßscheibe / washer - PS 60x75x2 DIN988 | |
| 57 | 1 | | Zylinderrollenlager / roller bearing - F 204754 | |
| 62 | 1 | | Zylinderrollenlager / roller bearing - NUP-2212-EC | |

| | | | | |
|----|-----|--|--|---------------|
| | | RK- PVBG4 SLS 40 | Ersatzteil-Satz / Replacement kit Serie PVplus, PV140 - PV180 Schwenklagersatz / cradle kit Konstruktionsstand / design series 40 - 44 enthält / includes: | |
| 5 | 1 | | Schwenklager / cradle | |
| 6 | 2 | | Gleitlagerschale / Trunnion bearing | |
| 46 | 2 | | Zylinderstift / locator pin - S10 x 28, 1.8159, VSM 1278 | |
| 82 | 2 | | Schraube / screw - ISO10642-M5x10-10.9 - TUF-LOK | |
| 83 | 4 | | Schraube TUF-LOK / screw coated - M8x20 DIN912 12.9 | |
| | | RK- PV140 PV180 HE N V 41 | Ersatzteil-Satz / Replacement kit Serie PVplus - PV140 Serie PVplus - PV180 Einstellspindel-Einheit / max. displacement limiter NBR FKM Konstruktionsstand / design series 41 - 44 enthält / includes: | |
| 28 | 1 | | Verschlußdeckel / servo piston cover | |
| 29 | 1 | | Einstellspindel / adjustment screw - M14x1,5 | Code: PV140 |
| 29 | 1 | | Einstellspindel / adjustment screw - M14x1,5 | Code: PV180 |
| 70 | 1 | | O-Ring 2-145-N552-90; 64,77 x 2,62 | Code: N, B |
| 70 | (1) | | O-Ring 2-145-V747-75; 64,77 x 2,62 | Code: V |
| 73 | 1 | | Dichtmutter / lock nut - M 14 x 1,5; SEAL LOCK | |
| | | RK- PVBG4 SRS 42 | Ersatzteil-Satz / Replacement kit Serie PVplus, PV140 - PV180 Schwenkrahmen-Satz / swash plate kit Konstruktionsstand / design series 41 - 44 enthält / includes: | |
| 3 | 1 | | Schwenkrahmen / swash plate | |
| 9 | 1 | | Anlenkstück Rückstellfeder / locator servo spring | |
| 11 | 1 | | Schwenkschraube / swash plate connector | |
| 99 | 1 | | Madenschraube M6 x 6; DIN 916 | |
| 25 | 1 | | Stopfen /plug - 1/16 NPTF; TUF-LOCK | |
| 12 | 1 | | Blende /orifice - Ø0,6; M6x6; TUF-LOCK | |
| 60 | 1 | | Kettenglied / chain link - 596GL | |
| | 1 | | Installationsanleitung / installation-manual | |
| | | RK- PVBG4 SB N V 43 | Ersatzteil-Satz / Replacement kit Serie PVplus, PV140 - PV180 Laufbuchse Stellkolben / servo piston sleeve NBR FKM Konstruktionsstand / design series 43 - 44 enthält / includes: | |
| 26 | 1 | | Laufbuchse / servo piston sleeve | |
| 66 | 1 | | O-Ring 2-036-N552-90; 60,05 x 1,78 | Code: N, B |
| 66 | (1) | | O-Ring 2-036-V747-75; 60,05 x 1,78 | Code: V |
| 71 | 1 | | O-Ring 2-035-N552-90; 56,87 x 1,78 | Code: N, B |
| 71 | (1) | | O-Ring 2-035-V747-75; 56,87 x 1,78 | Code: V |
| 76 | 1 | | Stützring / backup ring - 59,5 x 1,3 PTFE | Code: N, B, V |
| 77 | 1 | | Stützring / backup ring - 64,0 x 1,3 PTFE | Code: N, B, V |
| | | RK- PVBG4 LS 40 | Ersatzteil-Satz / Replacement kit Serie PV, alle Baugrößen / all frame sizes Lagersatz / bearing kit Konstruktionsstand / design series 40 - 44 enthält / includes: | |
| 38 | 2 | | Sicherungsring / snap ring - V-AV60x2 DIN471 | |
| 52 | 2 | | Passscheibe / washer - PS 60x75x2 DIN988 | |
| 57 | 1 | | Rollenlager, hinten / roller bearing, back - F 204754 | |
| 62 | 1 | | Rollenlager, vorn / roller bearing, front - NUP-2212-EC | |

| | | | | |
|----|-----|--|--|--|
| | | RK- PVBG4 ZED M S 40 | Ersatzteil-Satz / Replacement kit Serie PVplus, PV140 - PV180 Zentrierdeckel / pilot cover Anbauflansch / mounting interface METR - ISO 3019-2 Anbauflansch / mounting interface SAE - ISO 3019-1 Konstruktionsstand / design series 40- 44 enthält / includes: | |
| 18 | 1 | | Zentrierdeckel, metrisch / pilot cover, metric | Code: K, L |
| 18 | (1) | | Zentrierdeckel, SAE / pilot cover, SAE | Code: D, E |
| | | RK- PV000 EV N V 40 | Ersatzteil-Kit / Replacement kit PV series, all frame sizes Entlüftungsventil / Airbleed valve NBR FKM Konstruktionsstand / design series 40 - 46 enthält / includes: | |
| 32 | 1 | | Stopfen / port plug - VSTI-12x1,5-OR-CF ISO 6149 | Code: N,B |
| 32 | (1) | | Stopfen / port plug - VSTI-12x1,5-OR-CF ISO 6149 | Code: V |
| | | RK- PVBG4 KH 0 K M S T U W Y Z 40 | Ersatzteil-Satz / Replacement kit Serie PVplus, PV140 - PV180 Kegel- / Konturhülse / feedback-, contour sleeve Kegelhülse / feedback sleeve Konturhülse-Leistungsregelung / contour sleeve torque control Konturhülse-Leistungsregelung / contour sleeve torque control Konturhülse-Leistungsregelung / contour sleeve torque control Konturhülse-Leistungsregelung / contour sleeve torque control Konturhülse-Leistungsregelung / contour sleeve torque control Konturhülse-Leistungsregelung / contour sleeve torque control Konturhülse-Leistungsregelung / contour sleeve torque control Konturhülse-Leistungsregelung / contour sleeve torque control Konstruktionsstand / design series 40 - 44 enthält / includes: | 18,5 kW 22 kW 30 kW 37 kW 45 kW 55 kW 75 kW 90 & 110 kW |
| 13 | 1 | | Kegelhülse / feedback sleeve | |
| 13 | (1) | | contour sleeve - 18,5 kW | Code: K |
| 13 | (1) | | contour sleeve - 22 kW | Code: M |
| 13 | (1) | | contour sleeve - 30 kW | Code: S |
| 13 | (1) | | contour sleeve - 37 kW | Code: T |
| 13 | (1) | | contour sleeve - 45 kW | Code: U |
| 13 | (1) | | contour sleeve - 55 kW | Code: W |
| 13 | (1) | | contour sleeve - 75 kW | Code: Y |
| 13 | (1) | | contour sleeve - 90 kW | Code: Z & 2 |
| | | RK- PVBG4 APL R L 1 3 4 7 8 44 | Ersatzteil-Satz / Replacement kit Serie PVplus, PV140 - PV180 Anschlußplatte / cover Rechtslauf / rotaion clockwise Linkslauf / rotation counter-clockwise Gewinde / thread: metr.; Anschlüsse / ports: BSPP Gewinde / thread: UNC; Anschlüsse / ports: UNF Gewinde / thread: metr.; Anschlüsse / ports: BSPP / M14 Gewinde / thread: UNC; Anschlüsse / ports: ISO 6149 Gewinde / thread: metr.; Anschlüsse / ports: ISO 6149 Konstruktionsstand / design series 44 enthält / includes: | |
| 2 | 1 | | Rotation rl/cw; Gewinde/thread: metr.; Anschlüsse/ports: BSPP | Code: R + 1 |
| 2 | (1) | | Rotation rl/cw; Gewinde/thread: metr.; Anschlüsse/ports: BSPP | Code: R + 4 |
| 2 | (1) | | Rotation rl/cw; Gewinde/thread: metr.; Anschlüsse/ports: ISO 6149 | Code: R + 8 |
| 2 | (1) | | Rotation ll/ccw; Gewinde/thread: metr.; Anschlüsse/ports: BSPP | Code: L + 1 |
| 2 | (1) | | Rotation ll/ccw; Gewinde/thread: metr.; Anschlüsse/ports: BSPP | Code: L + 4 |
| 2 | (1) | | Rotation ll/ccw; Gewinde/thread: metr.; Anschlüsse/ports: ISO 6149 | Code: L + 8 |
| 2 | (1) | | Rotation rl/cw; Gewinde/thread: UNC; Anschlüsse/ports: UNF | Code: R + 3 |
| 2 | (1) | | Rotation rl/cw; Gewinde/thread: UNC; Anschlüsse/ports: ISO 6149 | Code: R + 7 |
| 2 | (1) | | Rotation ll/ccw; Gewinde/thread: UNC; Anschlüsse/ports: UNF | Code: L + 3 |
| 2 | (1) | | Rotation ll/ccw; Gewinde/thread: UNC; Anschlüsse/ports: ISO 6149 | Code: L + 7 |

| | | | | |
|---|-----|---|---|-------------------|
| | | RK- PVBG4 GEH M S 1 3 7 8 44 | Ersatzteil-Satz / Replacement kit Serie PVplus, PV140 - PV180 Gehäuse / housing Anbauflansch / mounting interface METR - ISO 3019-2 Anbauflansch / mounting interface SAE - ISO 3019-1 Gewinde / thread: metr.; Anschlüsse / ports: BSPP Gewinde / thread: metr.; Anschlüsse / ports: SAE Gewinde / thread: metr.; Anschlüsse / ports: ISO 6149 Gewinde / thread: metr.; Anschlüsse / ports: ISO 6149 Konstruktionsstand / design series 44 enthält / includes: | |
| 1 | 1 | | Gehäuse/housing - Anschluss / port: ISO; Flansch/flange: SAE | Code: S7 (D7, E7) |
| 1 | (1) | | Gehäuse/housing - Anschluss / port: BSPP; Flansch/flange: SAE | Code: S1 (D1, E1) |
| 1 | (1) | | Gehäuse/housing - Anschluss / port: UNF; Flansch/flange: SAE | Code: S3(D3, E3) |
| 1 | (1) | | Gehäuse/housing - Anschluss / port: ISO; Flansch/flange: metr. | Code: M8 (K8, L8) |
| 1 | (1) | | Gehäuse/housing - Anschluss / port: BSPP; Flansch/flange: metr. | Code: M1 (K1, L1) |

* Sonderkits auf Anfrage / special kits on demand



| Pos. | Stk/Qty | Code | Beschreibung / Description | Bemerkung/Remark |
|------|---------|--------------|--|---------------------|
| | | MK- | Montagesatz Kupplung/mounting kit coupling | |
| | | PVBG4 | Serie PVplus, PV140 - PV180 | |
| | | K01 | Anbaupumpe/second pump metric; N25 x 1,5 x 15 DIN 5480 | |
| | | K02 | Anbaupumpe/second pump metric; N32 x 1,5 x 20 DIN 5480 | |
| | | K03 | Anbaupumpe/second pump metric; N40 x 1,5 x 25 DIN 5480 | |
| | | K04 | Anbaupumpe/second pump metric; N50 x 2 x 24 DIN 5480 | |
| | | K11 | Anbaupumpe/second pump SAE; 9T16/32DP flat root side fit | |
| | | K12 | Anbaupumpe/second pump SAE; 11T16/32DP flat root side fit | |
| | | K13 | Anbaupumpe/second pump SAE; 13T16/32DP flat root side fit | |
| | | K14 | Anbaupumpe/second pump SAE; 15T16/32DP flat root side fit | |
| | | K15 | Anbaupumpe/second pump SAE; 14T12/24DP flat root side fit | |
| | | K16 | Anbaupumpe/second pump SAE; 17T12/24DP flat root side fit | |
| | | K17 | Anbaupumpe/second pump SAE; 13T8/16DP flat root side fit | |
| | | K18 | Anbaupumpe/second pump SAE; 15T8/16DP flat root side fit | |
| | | K20 | Anbaupumpe/second pump metric keyed / Paßfederwelle Ø 12 mm | |
| | | K21 | Anbaupumpe/second pump metric keyed / Paßfederwelle Ø 16 mm | |
| | | K22 | Anbaupumpe/second pump metric keyed / Paßfederwelle Ø 18 mm | |
| | | 40 | Konstruktionsstand / design series 40 - 44 enthält: | |
| 91 | (1) | | Kupplung metrisch / coupling metric: N50 x 2 x 24 DIN 5480 | Code: K04 |
| 91 | (1) | | Kupplung metrisch / coupling metric: N40 x 1,5 x 25 DIN 5480 | Code: K03 |
| 91 | (1) | | Kupplung metrisch / coupling metric: N32 x 1,5 x 20 DIN 5480 | Code: K02, K20 - 22 |
| 91 | (1) | | Kupplung metrisch / coupling metric: N25 x 1,5 x 15 DIN 5480 | Code: K01 |
| 91 | (1) | | Kupplung / coupling SAE: 15T8/16DP, flat root, side fit | Code: K18 |
| 91 | (1) | | Kupplung / coupling SAE: 13T8/16DP, flat root, side fit | Code: K17 |
| 91 | (1) | | Kupplung / coupling SAE: 17T12/24DP, flat root, side fit | Code: K16 |
| 91 | (1) | | Kupplung / coupling SAE: 14T12/24DP, flat root, side fit | Code: K15 |
| 91 | (1) | | Kupplung / coupling SAE: 15T16/32DP, flat root, side fit | Code: K14 |
| 91 | (1) | | Kupplung / coupling SAE: 13T16/32DP, flat root, side fit | Code: K13 |
| 91 | (1) | | Kupplung / coupling SAE: 11T16/32DP, flat root, side fit | Code: K12 |
| 91 | (1) | | Kupplung / coupling SAE: 9T16/32DP, flat root, side fit | Code: K11 |
| 92 | (1) | | Adapter Paßfederwelle / adaptor key shaft Ø 18 (+ Welle / shaft K02) | Code: K22 |
| 92 | (1) | | Adapter Paßfederwelle / adaptor key shaft Ø 16 (+ Welle / shaft K02) | Code: K21 |
| 92 | (1) | | Adapter Paßfederwelle / adaptor key shaft Ø 12 (+ Welle / shaft K02) | Code: K20 |

| | | MK- PVBG4 | Montagesatz Durchtrieb / mounting kit thru drive Serie PVplus, PV140 - PV180 | Schrauben und Scheiben für Anbau der zweiten Pumpe nicht enthalten / |
|----|-----|--------------|---|---|
| | | A | Für Anbaupumpe / for thru drive pump: SAE A, Ø 82,55 | |
| | | B | Für Anbaupumpe / for thru drive pump: SAE B, Ø 101,6 | |
| | | C | Für Anbaupumpe / for thru drive pump: SAE C, Ø 127 | |
| | | D | Für Anbaupumpe / for thru drive pump: SAE D, Ø 152,4 | |
| | | H | Für Anbaupumpe / for thru drive pump: metrisch Ø 80 | |
| | | J | Für Anbaupumpe / for thru drive pump: metrisch Ø 100 | |
| | | K | Für Anbaupumpe / for thru drive pump: metrisch Ø 125 | |
| | | L | Für Anbaupumpe / for thru drive pump: metrisch Ø 160 | |
| | | T | kein Durchtrieb + Stopfen / no thru drive + plug | |
| | | M | Metrisch / metric- Schrauben / screws | |
| | | S | UNC - Schrauben / screws | |
| | | N | NBR | |
| | | V | FKM | |
| | | 40 | Konstruktionsstand / design series 40 - 44 enthält: | screws and washer needed to fix the second pump not included. |
| 30 | 1 | | Durchtrieb / thru drive SAE A, Ø 82,55; Schrauben / screws: metr. | Code: A + M |
| 30 | (1) | | Durchtrieb / thru drive SAE A, Ø 82,55; Schrauben / screws: UNC | Code: A + S |
| 30 | (1) | | Durchtrieb / thru drive SAE B, Ø 101,6; Schrauben / screws: metr. | Code: B + M |
| 30 | (1) | | Durchtrieb / thru drive SAE B, Ø 101,6; Schrauben / screws: UNC | Code: B + S |
| 30 | (1) | | Durchtrieb / thru drive SAE C, Ø 127; Schrauben / screws: metr. | Code: C + M |
| 30 | (1) | | Durchtrieb / thru drive SAE C, Ø 127; Schrauben / screws: UNC | Code: C + S |
| 30 | (1) | | Durchtrieb / thru drive SAE D, Ø 152,4; Schrauben / screws: metr. | Code: D + M |
| 30 | (1) | | Durchtrieb / thru drive SAE D, Ø 152,4; Schrauben / screws: UNC | Code: D + S |
| 30 | (1) | | Durchtrieb / thru drive, metrisch Ø 80; Schrauben / screws: metr. | Code: H + M |
| 30 | (1) | | Durchtrieb / thru drive, metrisch Ø 80; Schrauben / screws: UNC | Code: H + S |
| 30 | (1) | | Durchtrieb / thru drive, metrisch Ø 100; Schrauben / screws: metr. | Code: J + M |
| 30 | (1) | | Durchtrieb / thru drive, metrisch Ø 100; Schrauben / screws: UNC | Code: J + S |
| 30 | (1) | | Durchtrieb / thru drive, metrisch Ø 125; Schrauben / screws: metr. | Code: K + M |
| 30 | (1) | | Durchtrieb / thru drive, metrisch Ø 125; Schrauben / screws: UNC | Code: K + S |
| 30 | (1) | | Durchtrieb / thru drive, metrisch Ø 160; Schrauben / screws: metr. | Code: L + M |
| 30 | (1) | | Durchtrieb / thru drive, metrisch Ø 160; Schrauben / screws: UNC | Code: L + S |
| 31 | 1 | | Verschlußplatte Durchtrieb / cover plate thru drive | Code: T |
| 69 | 1 | | O-Ring 2-153-N552-90; 88,57 x 2,62 | N |
| 69 | (1) | | O-Ring 2-153-V747-75; 88,57 x 2,62 | V |
| 84 | 1 | | O-Ring 2-041-N674-70; 75,92 x 1,78 | Code: A / H + N, B |
| 84 | (1) | | O-Ring 2-041-V747-70; 75,92 x 1,78 | Code: A / H + V |
| 84 | 1 | | O-Ring 2-044-N552-90; 94,97 x 1,78 | Code: B / J + N, B |
| 84 | (1) | | O-Ring 2-044-V747-75; 94,97 x 1,78 | Code: B / J + V |
| 84 | 1 | | O-Ring 2-048-N552-90; 120,37 x 1,78 | Code: C / K + N, B |
| 84 | (1) | | O-Ring 2-048-V747-75; 120,37 x 1,78 | Code: C / K + V |
| 84 | (1) | | O-Ring 2-162-N674-70; 145,72 x 2,62 | Code: D + N, B |
| 84 | (1) | | O-Ring 2-162-V 747-75; 145,72 x 2,62 | Code: D + V |
| 84 | (1) | | O-Ring 2-164-N552-90; 158,42 x 2,62 | Code: L + N, B |
| 84 | (1) | | O-Ring 2-164-V747-75; 158,42 x 2,62 | Code: L + V |
| 85 | 4 | | Schraube / hexagon socket head cap screw M12x30 DIN 912, 12.9 | metr. |
| 85 | (4) | | Schraube / hexagon socket head cap screw 1/2"-13UNCx1 1/4", 12.9 | UNC |
| 87 | 2 | | Zylinderstift / locator pin 8M6 x 16 DIN 7 für Durchtrieb / for thru drive | |
| 97 | 2 | | Schraube / hexagon socket head cap screw M10x20 DIN912 12.9 | Code: T (metr.) |
| 97 | (2) | | Schraube / hexagon socket head cap screw 3/8"-16UNCx3/4", 12.9 | Code: T (UNC) |

| Einzelteile nicht für Verkauf / Single parts not on sales | | | | |
|---|---------|------|---|--------------------|
| Pos. | Stk/Qty | Code | Beschreibung / Description | Bemerkung/Remark |
| | | | sonstige Teile / other parts | |
| 35 | 1 | | Drehrichtungsschild / rotation indicator plate | |
| 36 | 1 | | Typenschild / name plate | |
| 44 | 4 | | Niet / rivet UNIRIV;U-AF 1932-16485 | |
| 53 | 2 | | Magnetschild / magnet cover PV 140 - 180 | |
| 54 | 1 | | Magnetschild Durchtrieb / magnet cover for thru drive | mit / with Adapter |
| 55 | 1 | | Schutzstopfen Leckölanschluß / port plug 1" BSPP | threads Code: 1 |
| 55 | (1) | | Schutzstopfen Leckölanschluß, M33x2 ISO6149 | threads Code: 7, 8 |
| 55 | (1) | | Schutzstopfen Leckölanschluß, 1 5/16"-12 UNF | threads Code: 3 |
| 96 | 1 | | Ringschraube / eye bolt - M10 DIN 580 | |

erhältlich als Sonderkit - siehe: / available as special kit- see: PVI-PV000-REP-DE-GB